

# Multi-Variable Text and Graphics Commands

©2006 by Softnet Systems, Inc.

Page 1 of 3

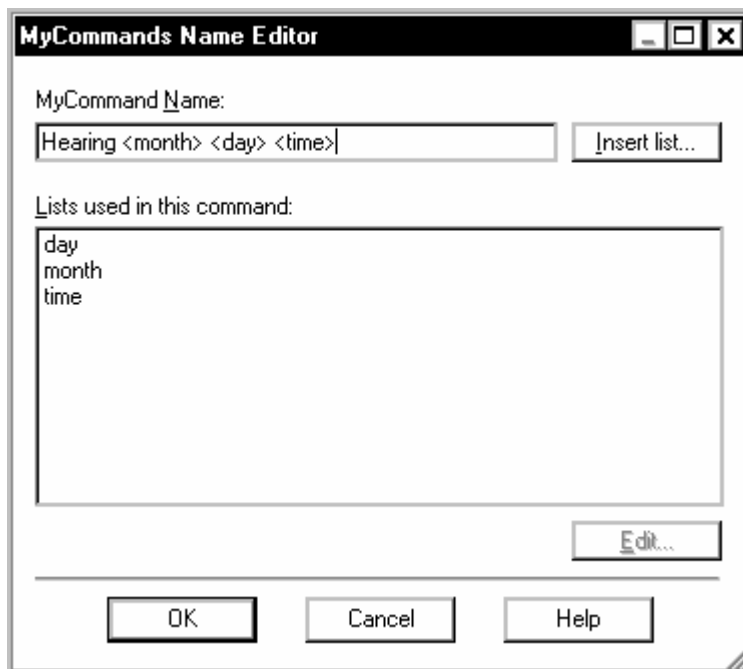
## ***Multiple-Variable Text & Graphic Commands***

These Text & Graphics commands with simple or complex lists allow use of multiple variables. That is, if your desired text has more than one variable, you may still be able to use these commands.

To use three variables, the command name needs to include three variables, and the text separately references the variables. For example, you can have a list "<month>", a list "<day>", and a list "<time>" to use in a command:

Hearing <month> <day> <time>

Three lists need to be defined, "<month>", "<day>" and "<time>". When you first go to the name editor to create these lists, you can enter the entire command name. You will then have a Name Editor screen looking like:



Then you can build the lists, one at a time, just as a single list was built. If a list already exists, you do not need to enter the values again.

The list "<month>" is a simple list:

January

# Multi-Variable Text and Graphics Commands

©2006 by Softnet Systems, Inc.

Page 2 of 3

February

...

December

The list "<day>" is a complex list, because Dragon NaturallySpeaking® recognizes numeric list values better if the spoken form is the written form of the number. So the list consists of:

1\one

2\two

...

31\thirty one

The list <time> is simplified for this example, but you are free to expand this complex list. The times in the list are 30-minute intervals in a normal business day. Note again that the right-hand side is what is spoken, the left-hand side is what is written.

8:00AM\eight

8:30AM\eight thirty

9:00AM\nine

...

Noon\noon

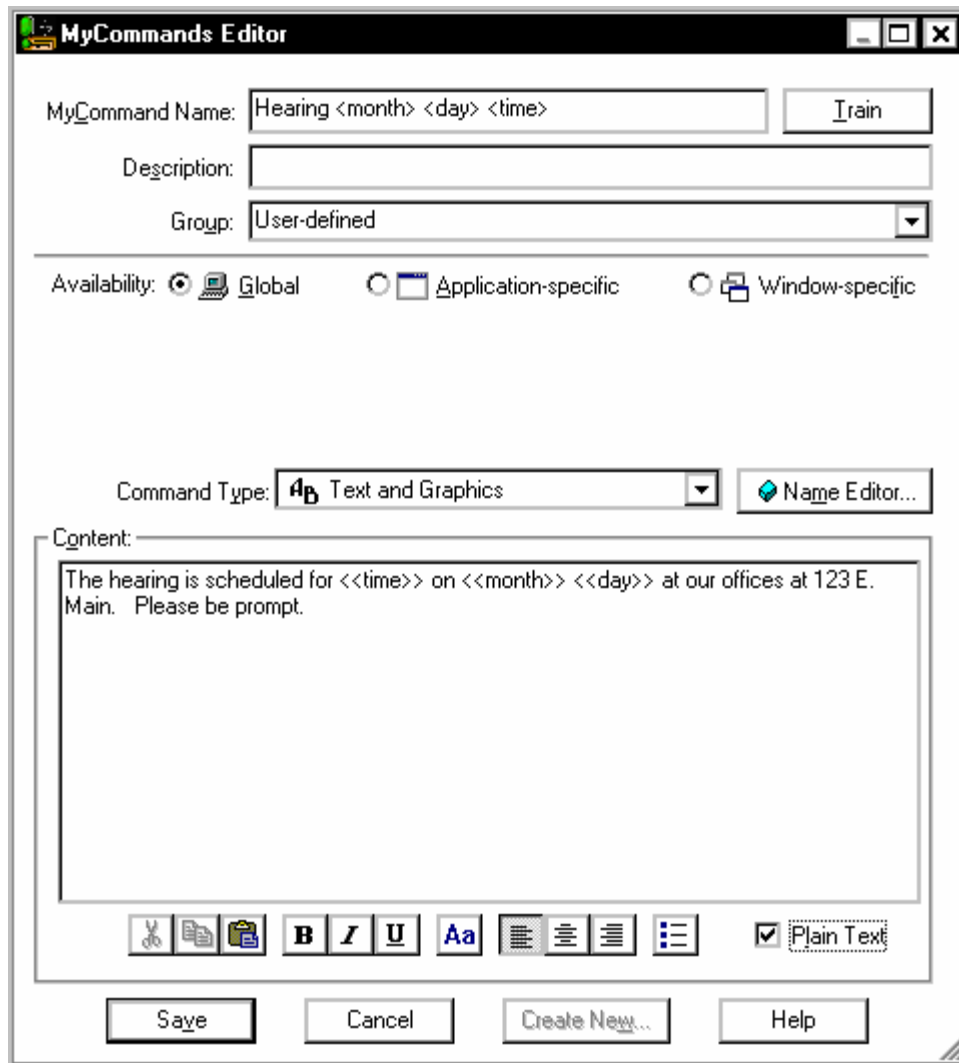
12:30PM\twelve thirty

...

4:30PM\four thirty

The command can have substantial text, but in general will look something like:

# Multi-Variable Text and Graphics Commands



Up to twenty variables are allowed, but in practice few people can voice more than 8-10 such variables in a command consistently.